



PEDOC

THE OUTDOOR ELECTRIC POWER SOLUTION



Providing durable, attractive, and economical electrical/data solutions



PEDOC Power Pedestals are
UL Listed, made in the USA,
and compatible with all
standard ***NEMA*** devices.



Providing durable, attractive, and economical electrical/data solutions

SOME LOCATIONS YOU MAY HAVE SEEN PEDOCs

- High-rise balconies
- Streetscapes
- Stadiums
- Parks
- University campuses
- River walks



- Residential landscaping
- Street fairs
- Campgrounds
- Car charging stations
- Golf courses
- Many more!



Providing durable, attractive, and economical electrical/data solutions

DURABLE

- Provides long lasting protection from exposure to dangerously corroded and exposed electrical wires
- Solidly constructed from 14 gauge stainless steel
- UL listed & rated NEMA 3R
- Hinge top models have an in-use self-closing cover with locking holes allowing for safe usage

ATTRACTIVE

- Powder coated in color or polished stainless steel (requires tea stain waiver)
- Multiple variations to blend in with any environment
- Specified by many architects in plans across multiple industries
- Several sizes and configurations available
- May be coated in a custom color to your specifications

Available Colors *(colors simulated)*



ECONOMICAL

- No costly upkeep of traditional outdoor conduit/boxes which require cyclical repair & replacement
- Built for years of trouble free use which will withstand harsh outdoor conditions
- Cost effective pricing structure



WITH INTEGRAL BASE MODELS

- Constructed of 14 gauge stainless steel with 8" diameter 7 gauge S.S. base for mounting with four 7/16" holes (mounting hardware included)
- Each unit has a ground conductor terminal & open base will accommodate up to two 1-1/2" max conduits
- Mounting holes provided for receptacles, switches (those accessories not included) and weatherproof covers (N/A for hinge top models)
- All models may be ordered with a divided configuration for high/low voltage applications
- UL listed & rated NEMA 3R

STANDARD WITH BASE

(PAGE 5)

- Sized 18" to 48" in 6" increments
- Offered in single (vertical – or - horizontal) and two gang usable with 60 amp max receptacles or switches



Sample standard two gang model

Can be divided & include a 2nd ground terminal

1 gang vertical cutout



1 gang horizontal cutout



ONE GANG HINGE TOP WITH BASE

(PAGE 6)

Lockable S.S. cover!



In-use self closing cover!

- Sized 18" to 48" in 6" increments
- Usable up to 20 amp max receptacles or switches
- Divided model available with an insert with 2 data cutouts

5 X5 TWO GANG HINGE TOP WITH BASE

(PAGE 7)

- Sized 18" to 48" in 6" increments
- Usable up to 20 amp max receptacles or switches
- 30 amp receptacle may be used with a special device opening plate insert

In use S.S. self closing & lockable cover!



Sample of inserts



STANDARD PEDESTALS WITH INTEGRAL BASE (5" wide x 2.5" deep)

- Constructed of 14 gauge S.S. with 8" diameter 7 gauge S.S. base for mounting with four 7/16" holes (mounting hardware included)
- Each unit has a ground conductor terminal and open base will accommodate up to two 1-1/2" max conduits
- Mounting holes provided for receptacles, switches and weatherproof covers (those accessories not included)
- All models may be ordered with a divided configuration for high/low voltage applications
- UL listed & rated NEMA 3R



HEIGHT	TWO GANG		SINGLE GANG				TWO GANG DIVIDED	
	Powder coated	Polished Finish	Powder coated		Polished Finish		Powder coated	Polished Finish
			Horizontal	Vertical	Horizontal	Vertical		
6"	2P6-C-*	2P6-SS	1P6-C-HZ-*	1P6-C-V-*	1P6-SS-HZ	1P6-SS-V	2P6-C-D-*	2P6-SS-D
12"	2P12-C-*	2P12-SS	1P12-C-HZ-*	1P12-C-V-*	1P12-SS-HZ	1P12-SS-V	2P12-C-D-*	2P12-SS-D
18"	2P18-C-*	2P18-SS	1P18-C-HZ-*	1P18-C-V-*	1P18-SS-HZ	1P18-SS-V	2P18-C-D-*	2P18-SS-D
24"	2P24-C-*	2P24-SS	1P24-C-HZ-*	1P24-C-V-*	1P24-SS-HZ	1P24-SS-V	2P24-C-D-*	2P24-SS-D
30"	2P30-C-*	2P30-SS	1P30-C-HZ-*	1P30-C-V-*	1P30-SS-HZ	1P30-SS-V	2P30-C-D-*	2P30-SS-D
36"	2P36-C-*	2P36-SS	1P36-C-HZ-*	1P36-C-V-*	1P36-SS-HZ	1P36-SS-V	2P36-C-D-*	2P36-SS-D
42"	2P42-C-*	2P42-SS	1P42-C-HZ-*	1P42-C-V-*	1P42-SS-HZ	1P42-SS-V	2P42-C-D-*	2P42-SS-D
48"	2P48-C-*	2P48-SS	1P48-C-HZ-*	1P48-C-V-*	1P48-SS-HZ	1P48-SS-V	2P48-C-D-*	2P48-SS-D

PART NUMBERING INSTRUCTIONS:

Insert COLOR CODE in place of the * at the end of the model number (see page 3 for color options).
If polished stainless steel is required insert "SS" instead of "C"

EXAMPLE: 1P6-C-HZ-**BR** for a 6" pedestal with base and single gang horizontal cutout powder coated in **BROWN**

For a #4 polished stainless steel (SS) finish a [tea stain waiver](#) must be signed and submitted with purchase order

ONE GANG
HORIZONTAL
CUTOUT



ONE GANG
VERTICAL
CUTOUT





ONE GANG HINGE TOP PEDESTALS WITH INTEGRAL BASE (6.13" wide x 2.75" deep)

- Constructed of 14 gauge S.S. with 8" diameter 7 gauge S.S. base for mounting with four 7/16" holes (mounting hardware included)
- Each unit has a ground conductor terminal and open base will accommodate up to two 1-1/2" max conduits
- Device mounting insert with holes included which is usable with GFCI 20 amp max receptacle or switch (those accessories not included)
- All models may be ordered with a divided configuration for high/low voltage applications
- UL listed & rated NEMA 3R

*In use S.S.
self-closing &
lockable cover!*



HINGE TOP		
Height	Powder coated	Polished SS
18"	1P18-C-HT-*	1P18-SS-HT
24"	1P24-C-HT-*	1P24-SS-HT
30"	1P30-C-HT-*	1P30-SS-HT
36"	1P36-C-HT-*	1P36-SS-HT
42"	1P42-C-HT-*	1P42-SS-HT
48"	1P48-C-HT-*	1P48-SS-HT

DIVIDED HINGE TOP		
Height	Powder coated	Polished SS
18"	1P18-C-D-HT-*	1P18-SS-D-HT
24"	1P24-C-D-HT-*	1P24-SS-D-HT
30"	1P30-C-D-HT-*	1P30-SS-D-HT
36"	1P36-C-D-HT-*	1P36-SS-D-HT
42"	1P42-C-D-HT-*	1P42-SS-D-HT
48"	1P48-C-D-HT-*	1P48-SS-D-HT

PART NUMBERING INSTRUCTIONS:

Insert COLOR CODE in place of the * at the end of the model number (see page 3)

If polished stainless steel is required insert "SS" instead of "C"

EXAMPLE: 1P18-C-HT-**G** for a 18" pedestal with base and single gang horizontal cutout powder coated in **GRAY**

For a #4 polished stainless steel (SS) finish a [tea stain waiver](#) must be signed and submitted with purchase order



5x5 TWO GANG HINGE TOP PEDESTALS WITH INTEGRAL BASE (5" wide x 5" deep)

- Constructed of 14 gauge S.S. with 8" diameter 7 gauge S.S. base for mounting with four 7/16" holes (mounting hardware included)
- Each unit has a ground conductor terminal & will accommodate up to two 1-1/2" max conduits
- Mounting inserts included with holes provided for receptacles and switches (those accessories are not included)
- All models may be ordered with a divided configuration for high/low voltage applications or a 30 amp receptacle with a special insert (included)
- UL listed & rated NEMA 3R



*In-use S.S.
self-closing &
lockable cover!*

Ht.	TWO GANG	
	Powder coated	Polished SS
18"	5P18-C-HT-1-*	5P18-SS-HT-1
24"	5P24-C-HT-1-*	5P24-SS-HT-1
30"	5P30-C-HT-1-*	5P30-SS-HT-1
36"	5P36-C-HT-1-*	5P36-SS-HT-1
42"	5P42-C-HT-1-*	5P42-SS-HT-1
48"	5P48-C-HT-1-*	5P48-SS-HT-1

TWO GANG DIVIDED	
Powder coated	Polished SS
5P18-C-D-HT-2-*	5P18-SS-D-HT-2
5P24-C-D-HT-2-*	5P24-SS-D-HT-2
5P30-C-D-HT-2-*	5P30-SS-D-HT-2
5P36-C-D-HT-2-*	5P36-SS-D-HT-2
5P42-C-D-HT-2-*	5P42-SS-D-HT-2
5P48-C-D-HT-2-*	5P48-SS-D-HT-2

30 AMP	
Powder coated	Polished SS
5P18-C-HT-3-*	5P18-SS-HT-3
5P24-C-HT-3-*	5P24-SS-HT-3
5P30-C-HT-3-*	5P30-SS-HT-3
5P36-C-HT-3-*	5P36-SS-HT-3
5P42-C-HT-3-*	5P42-SS-HT-3
5P48-C-HT-3-*	5P48-SS-HT-3

PART NUMBERING INSTRUCTIONS:

Insert COLOR CODE in place of the * at the end of the model number (**see page 3**)
If polished stainless steel is required insert "SS" instead of "C"

EXAMPLE: 5P36-C-HT-**BR** for a two gang 5 x 5 36" pedestal with base powder coated in **BROWN**

For a #4 polished stainless steel (SS) finish a [tea stain waiver](#) must be signed and submitted with purchase order

Sample of Inserts





WITHOUT INTEGRAL BASE MODELS

- Constructed of 14 gauge S.S.
- Each unit has a ground conductor terminal & will accommodate up to two 1-1/2" max conduits
- Mounting holes provided for receptacles, switches (those accessories not included) and weatherproof covers (N/A for hinge top models)
- Open bottom and removable front access cover allows for easy installation
- 5 x 5 models may be ordered with a divided or 30 amp configuration
- UL listed & rated NEMA 3R

STANDARD MODEL (PAGE 9)

- Sized in 18" to 48" in 6" increments
- Offered in single (vertical – or - horizontal) and two gang
- Usable with 60 amp max receptacles or switches
- Two gang may be divided and include a 2nd ground terminal

Sample two gang model without base

1 gang vertical cutout



1 gang horizontal cutout



1 GANG HINGE TOP (PAGE 10)

- Sized in 42" to 54" in 6" increments
- Usable with 20 amp max receptacles or switches

Sample of a one gang hinge top without base model



In-use S.S. self closing & lockable cover!



Close-up view of cover

2 GANG HINGE TOP (5 x 5) (PAGE 11)

- Sized in 42" to 54" in 6" increments
- Usable with 20 amp max receptacles or switches
- 30 amp receptacle can be used on this model with special device mounting plate insert

In-use S.S. self closing & lockable cover!

Sample of a two gang 5 x 5 hinge top without base model

Sample of inserts





ONE & TWO GANG STANDARD PEDESTALS WITHOUT INTEGRAL BASE (5" wide x 2.5" deep)

- Offered with single (vertical – or - horizontal) or two gang cutouts with mounting holes
- Usable with 60 amp max receptacles or switches (not included)
- Each unit has a ground conductor terminal & will accommodate up to two 1-1/2" max conduits
- Open bottom and removable front access cover allows for easy installation
- Two gang may be divided and include a 2nd ground terminal
- Must be buried 24" deep minimum (when buried, the front opening cover on a 42" model will be partially in ground)
- UL listed & rated NEMA 3R

*Sample two gang model
without base*

SINGLE GANG				
Height	Powder coated		Polished	
	Horizontal	Vertical	Horizontal	Vertical
42"	142-C-HZ-*	142-C-V-*	142-SS-HZ	142-SS-V
48"	148-C-HZ-*	148-C-V-*	148-SS-HZ	148-SS-V
54"	154-C-HZ-*	154-C-V-*	154-SS-HZ	154-SS-V

TWO GANG		
Height	Powder coated	Polished
42"	242-C-*	242-SS
48"	248-C-*	248-SS
54"	248-C-*	254-SS

DIVIDED TWO GANG		
Height	Powder coated	Polished
42"	242-C-D-*	242-SS-D
48"	248-C-D-*	248-SS-D
54"	254-C-D-*	254-SS-D

1 gang
vertical cutout



1 gang
horizontal cutout



PART NUMBERING INSTRUCTIONS:

Insert COLOR CODE in place of the * at the end of the model number (see page 3)

If polished stainless steel is required insert "SS" instead of "C"

EXAMPLE: **242-C-G** for a two gang cutout, 42" long, ground burial pedestal without base powder coated in **GRAY**

For a #4 polished stainless steel (SS) finish a [tea stain waiver](#) must be signed and submitted with purchase order



THE OUTDOOR ELECTRIC POWER SOLUTION



ONE GANG HINGED TOP PEDESTALS WITHOUT INTEGRAL BASE (2.75" wide x 6.13" deep)

- Constructed of 14 gauge S.S.
- Each unit has a ground conductor terminal and will accommodate up to two 1-1/2" max conduits
- Device mounting insert with holes included which is usable with GFCI 20 amp max receptacle or switch (those accessories not included)
- All models may be ordered with a divided configuration for high/low voltage applications
- Open bottom and removable front access cover allows for easy installation
- Must be buried 24" deep minimum (when buried, the front opening cover on a 42" model will be partially in ground)
- UL listed & rated NEMA 3R

*In-use S.S.
self-closing &
lockable
cover!*



<u>SINGLE GANG HINGE TOP WITH BASE MODELS</u>		
Height	Powder coated	Polished
42"	142-C-HT-*	142-SS-HT
48"	148-C-HT-*	148-SS-HT
54"	154-C-HT-*	154-SS-HT

<u>DIVIDED SINGLE GANG HINGE TOP WITH BASE</u>		
Height	Powder coated	Polished SS
42"	142-C-D-HT-*	142-SS-D-HT
48"	148-C-D-HT-*	148-SS-D-HT
54"	154-C-D-HT-*	154-SS-D-HT

PART NUMBERING INSTRUCTIONS:

Insert COLOR CODE in place of the * at the end of the model number (see page 3)

If polished stainless steel is required insert "SS" instead of "C"

EXAMPLE: 148-SS-HT for a single gang, 48" tall, hinge top without base finished in **POLISHED STAINLESS STEEL**

For a #4 polished stainless steel (SS) finish a [tea stain waiver](#) must be signed and submitted with purchase order

Close-up
view of
cover





5 x 5 TWO GANG HINGE TOP PEDESTALS WITHOUT INTEGRAL BASE (6.3" wide x 5.25" deep)

- Constructed of 14 gauge S.S.
- Each unit has a ground conductor terminal and will accommodate up to two 1-1/2" max conduits
- Open bottom and removable front access cover allows for easy installation
- Mounting inserts and holes included for receptacles and switches (those accessories not included)
- All models may be ordered with a divided configuration or a 30 amp receptacle with a special insert (included)
- Must be buried 24" deep minimum (when buried, the front opening cover on a 42" model will be partially in ground)
- UL listed & rated NEMA 3R

In-use S.S. self-closing & lockable cover!



TWO GANG (use -1)		
Height	Powder coated	Polished
42"	542-C-HT-1-*	542-SS-HT-1
48"	548-C-HT-1-*	548-SS-HT-1
54"	554-C-HT-1-*	554-SS-HT-1



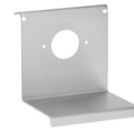
Two gang insert (-1)

<u>DIVIDED</u> TWO GANG (use -2)		
Height	Powder coated	Polished
42"	542-C-D-HT-2-*	542-SS-D-HT-2
48"	548-C-D-HT-2-*	548-SS-D-HT-2
54"	554-C-D-HT-2*	554-SS-D-HT-2



Divided two gang insert(-2)

30 AMP (use -3)		
Height	Powder coated	Polished
42"	542-C-HT-3-*	542-SS-HT-3
48"	548-C-HT-3-*	548-SS-HT-3
54"	554-C-HT-3-*	554-SS-HT-3



30 amp insert (-3)
1-9/16" **OR** 2-1/8"
diameter hole

PART NUMBERING INSTRUCTIONS:

Insert COLOR CODE in place of the * at the end of the model number (**see page 3**)

If polished stainless steel is required insert "SS" instead of "C"

EXAMPLE: 554-C-HT-1-**GN** for a two gang 5 x 5, 52" tall without base model powder coated in **GREEN**

For a #4 polished stainless steel (SS) finish a [tea stain waiver](#) must be signed and submitted with purchase order

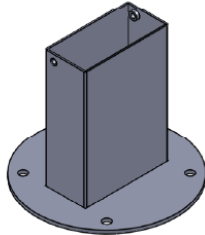


ACCESSORY: PMB – PEDESTAL MOUNTING BRACKETS (under UL review)

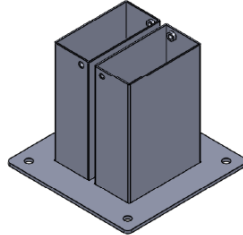
- PMB's support PEDOC's on a flat surface, at or above grade
- Made from 14 gauge STAINLESS STEEL
- Used with models without an integral base

AVAILABLE IN 2 CONFIGURATIONS

SINGLE PMB (8"
DIAMETER BASE)
MODEL #
PMB-C-S-*



DOUBLE PMB (8"
SQUARE BASE)
MODEL #
PMB-C-2BB-*



PEDOC unit(s) slides down into the housing (single or double) housing and is secured with screws on housing sides

Brackets provided to support PEDOCs on a flat surface at or above grade without having the lower section buried into the ground



Wire through bottom opening not shown

PART NUMBERING INSTRUCTIONS:

Insert COLOR CODE in place of the * at the end of the model number (**see page 3**)
If polished stainless steel is required insert "SS" instead of "C"

EXAMPLE: PMB-C-S-B for a single gang pedestal mounting bracket powder coated in **BLACK**

For a #4 polished stainless steel (SS) finish a [tea stain waiver](#) must be signed and submitted with purchase order